

The dollar debates: Comparing the implications of judicial versus political intervention for school finance reform

Author: Marissa L. Marandola

Persistent link: <http://hdl.handle.net/2345/bc-ir:106777>

This work is posted on [eScholarship@BC](#),
Boston College University Libraries.

2016

This work is licensed under a Creative Commons Attribution-NonCommercial 4.0 International License (<http://creativecommons.org/licenses/by-nc/4.0/>).



The Dollar Debates:

Comparing the Implications of Judicial versus Political Intervention for School Finance Reform

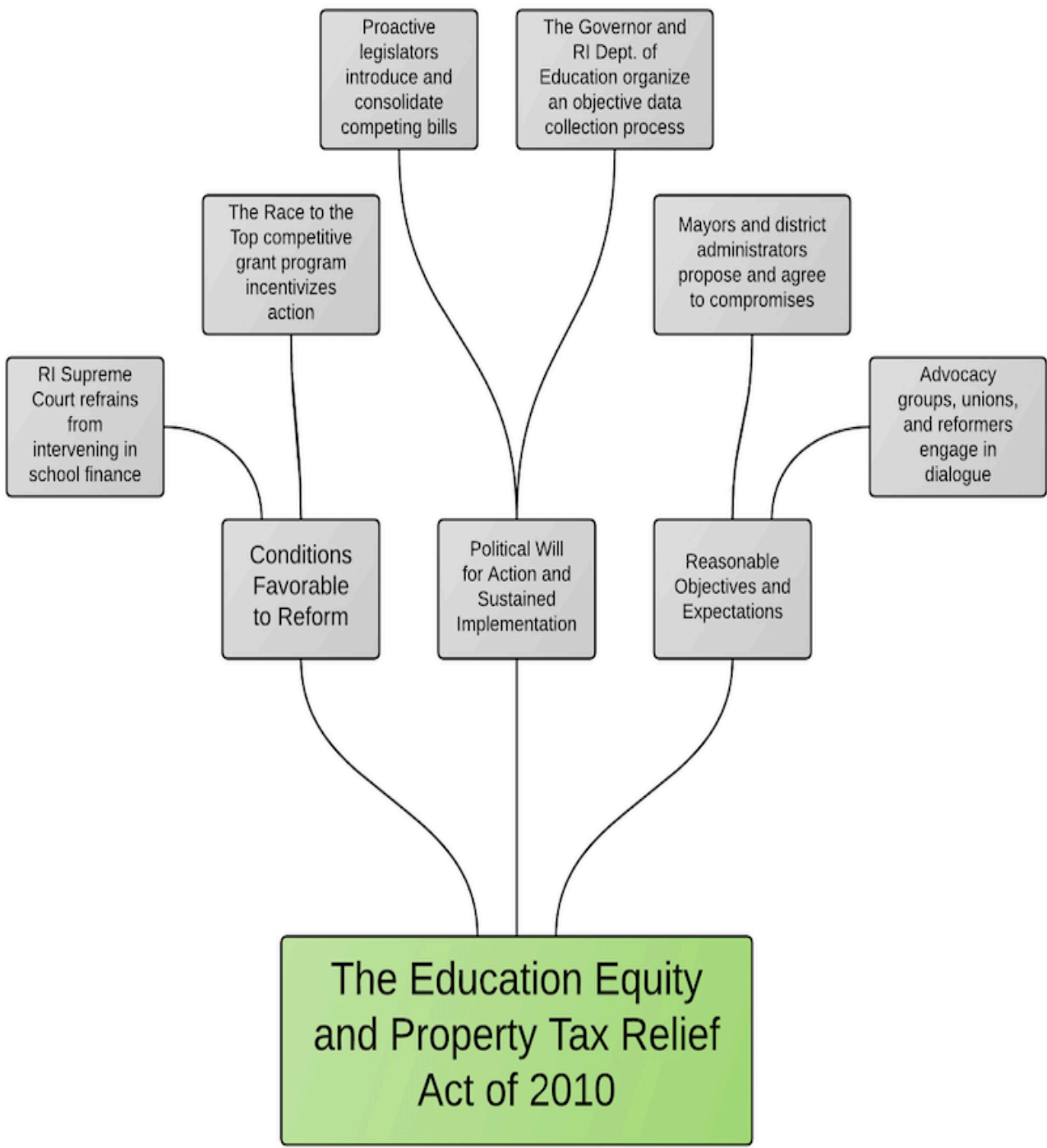
Marissa L. Marandola



Rhode Island

The Rhode Island Supreme Court chose to respect the state legislature’s primacy in determining allocations. As a result, the state undertook a years-long, scientifically guided process to develop an acclaimed formula that enjoys enduring support in te political branches. The resulting Education Equity and Property Tax Relief Act of 2010 produced the Fair Funding Formula, a foundation amount allocation mechanism that accounts for district and student need.

The Process



The Outcomes

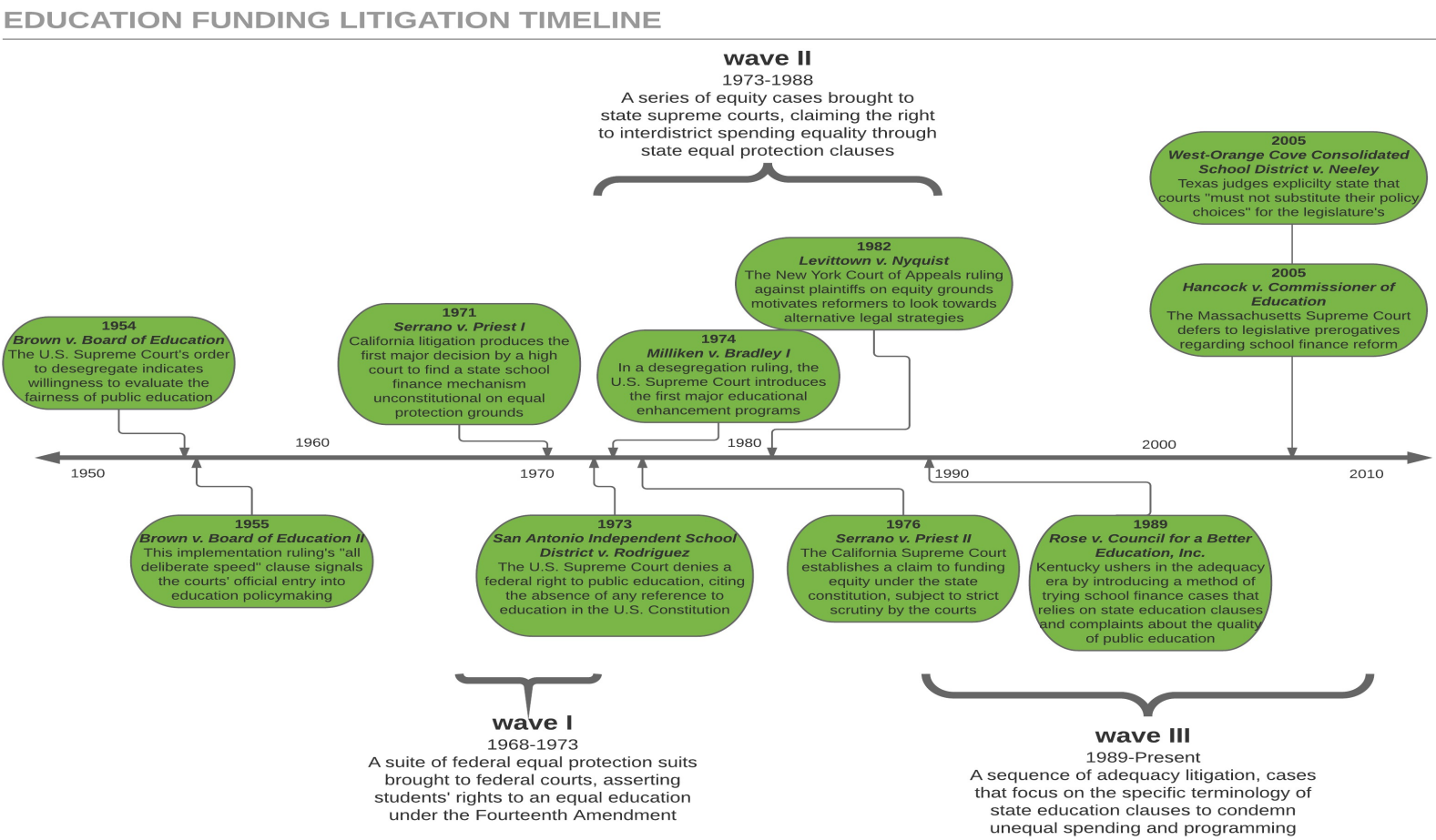
Comparison of Design Elements Featured in Stakeholders' Proposal Formula Models and Elements Featured in the Fair Funding Formula						
	Foundation Amt. Formula	Multiple Student Weights	ADM/RADM	EWAV	Minimum Share Ratio	Taxpayer Equity
R.C. Wood and Assoc.	X	X			X	X
Joint Committee	X	X	X		X	
Funding Our Future	X	X				X
2007-2009 Bills	X	X	X	X	X	X
Local Government	X	X		X	X	X
Fair Funding Formula	X		X	X	X	X

Rhode Island's Average NAEP Scores, 2009-2015				
	Grade 4 Math	Grade 4 Reading	Grade 8 Math	Grade 8 Reading
2009	239	223	278	260
2011	242	222	283	265
2013	241	223	284	267
2015	238	225	281	265

Data from the National Center for Education Statistics.

Background

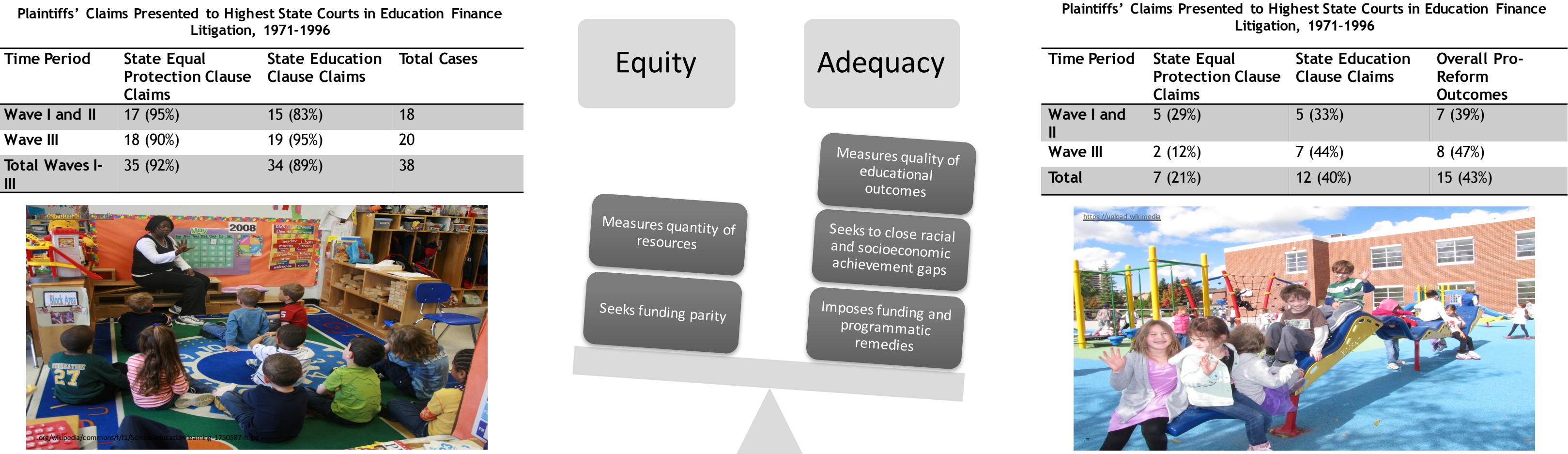
A Brief History of Education Finance Litigation



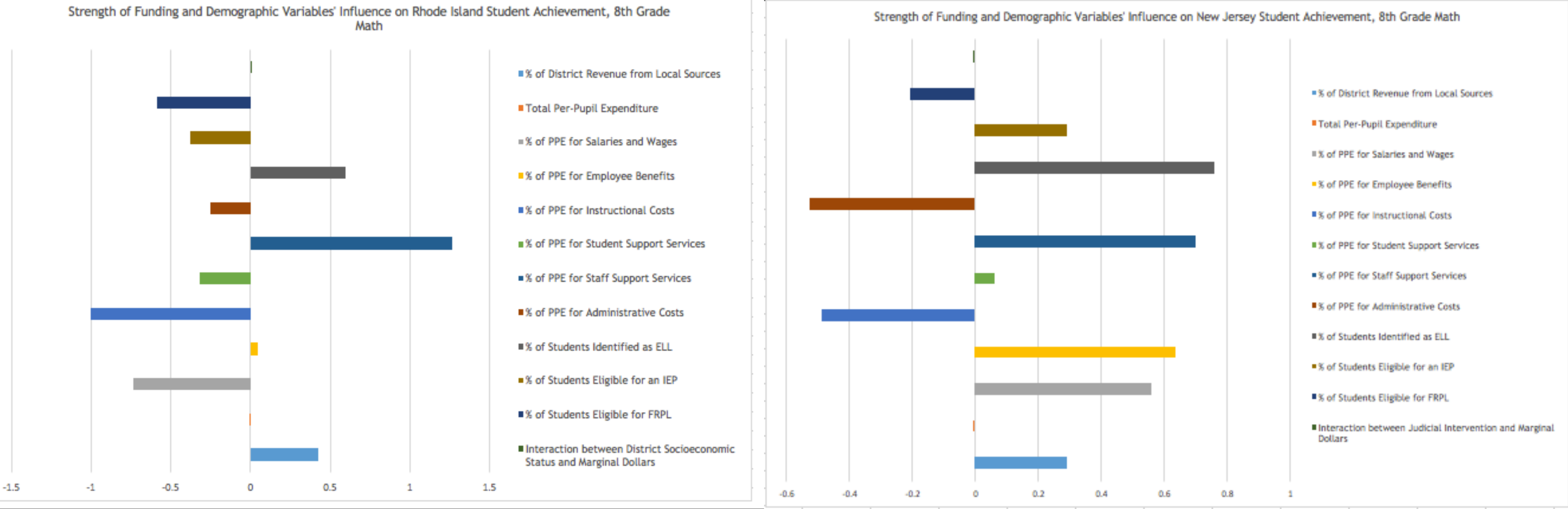
Case	State	Year	Decision on Equal Protection Clause Claim	Decision on Education Clause Claim	Case Outcome
Serrano v. Priest	CA	1971	Upheld	Denied	For reform
Robinson v. Cahill	NJ	1973	Denied	Upheld	For reform
Horton v. Meskill	CT	1977	Upheld	Upheld	For reform
Seattle School District No. 1 v. State	WA	1978	No claim	Upheld	For reform
Pauley v. Kelly	WV	1979	Upheld	Upheld	For reform
Washakie County School District No. 1 v. Herschler	WY	1980	Upheld	Claim uncertain	For reform
DuPre v. Alma School District No. 30	AR	1983	Upheld	Upheld	For reform

Highest State Court Rulings on Equal Protection and Education Clause Claims for Wave I and Wave II Cases Resulting in Plaintiffs' Victories

How should we evaluate school funding mechanisms?



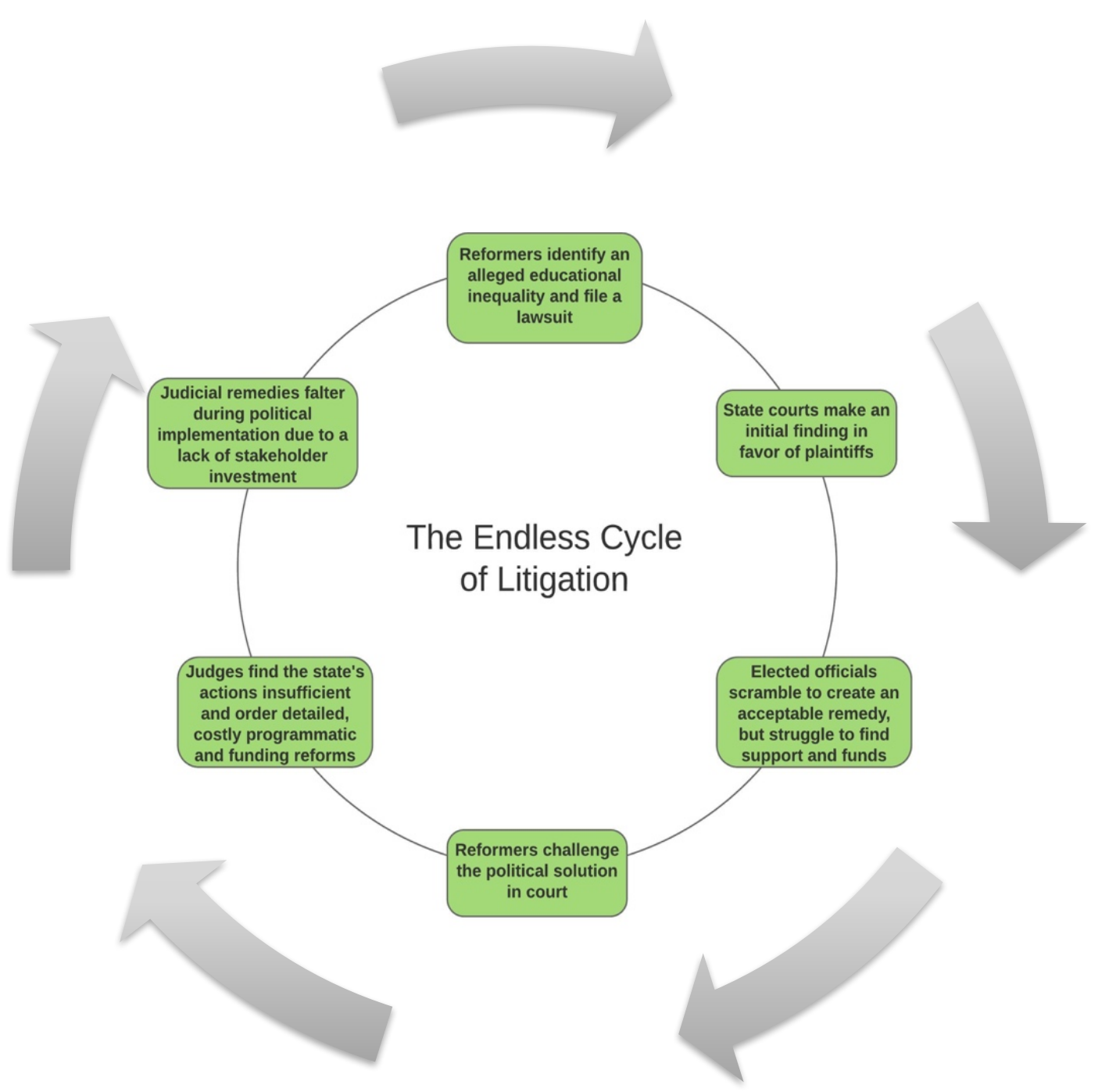
Does Funding Impact Student Achievement?



New Jersey

New Jersey has been embroiled in litigation since 1973, a costly process that has produced mixed results. *Robinson v. Cahill I-V* and *Abbott v. Burke I-XXII* demonstrate the risks inherent to judicial intervention: sprawling remedies and usurpation of the legislative prerogative. Further, rulings favorable to disadvantaged students continually falter during implementation, when the political branches lack the resources to enact a sweeping judicial policy.

The Process



The Outcomes

